

Quick User Guide

SOUND4 IMPACT

Intelligent AGC, 6-Band Processor,
Stereo Enhancer, Dynamic Clipper
+ many options

→ **BEFORE YOU USE THIS PRODUCT** ←

In order to be able to enjoy all the benefits of owning your new SOUND4 product, please verify first that the latest software and firmware release were installed.

Visit www.sound4.com/downloads for the most recent software and firmware downloads, prior the installation.

This Quick user guide will make the installation of SOUND4 IMPACT quick and easy. Applying these principles, you can simplify the process and save yourself extra time and effort.

STEP 1

Universal Installer

The Universal Products Installer is the complete installation kit for all SOUND4 Products. The program is provided free of charge and can be downloaded from www.sound4.com/downloads. Installation packages for MS Windows and Linux Ubuntu OS are available.

STEP 1.1

Windows users

Upon entering the section, click on and download Universal All Products Installer. Once the process is completed install the .exe file. SOUND4's products are compatible with the Microsoft Windows Operating Systems listed below:

- Windows 7 - 32 & 64 bits
- Windows 8 - 32 & 64 bits
- Windows 10 - 32 & 64 bits
- Windows Server 2008 - R2
- Windows Server 2012

IMPORTANT NOTE: Due to Microsoft security changes, your operating system must be up-to-date, if not SOUND4 Driver will be locked by Microsoft and you will be not able to run the SOUND4 Remote Control Software.

STEP 1.2

Linux Ubuntu OS

SOUND4 proposes you to install the software package under your own Ubuntu. Compatibility with Ubuntu distributions:

- Lucid Lynx - 10.04 LTS
- Precise Pangolin - 12.04 LTS
- Trusty Tahr - 14.04 LTS
- Xenial Xerus - 16.04 LTS

Installation for a PC running compatible Ubuntu version:

- Click on the following link to add SOUND4 repository -
www.sound4.biz/repository/ubuntu/sound4-repository.deb

If you also want to install:

- the SOUND4 Remote Control, please use the following link - apt://sound4remote

If you prefer to manage package installation by yourself, please follow the instructions below:

1. Add the following source to your Ubuntu repository list (example for Lucid) -
`deb http://www.sound4.biz/repository/ubuntu lucid non-free`
2. Then get the SOUND4 GPG signature key -
`wget -q http://www.sound4.biz/repository/sound4.gpg -O- | sudo apt-key add -`
3. Install required packages -
`sudo apt-get update && sudo apt-get install sound4remote`
4. Add the user to the audio group (needed for Alarm Stacker GUI) -
`sudo adduser $USER audio`
5. Log off and on to make the settings effective.

STEP 2

Connection

For the initial set-up of the device you will only need to connect:

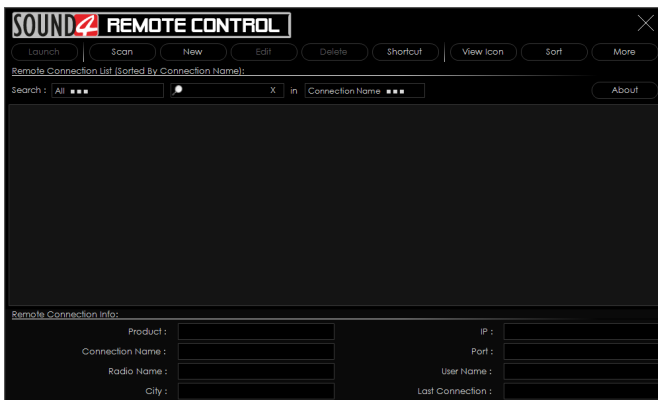
- 1 of the power cables to PSU 1 socket;
- Connect SOUND4 IMPACT to the TCP/IP network using a direct network cable, connected to the ADMIN port of the device NOT to the IP ports.



STEP 3

Software

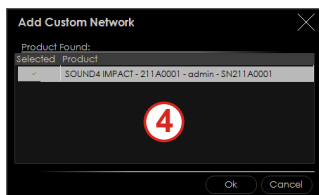
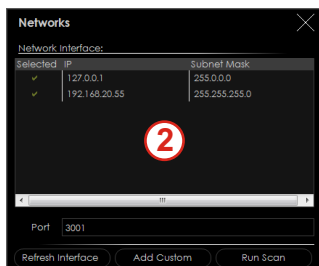
Double click on the software will open the main control window. The Remote control software can maintain several devices at once. There are two options of adding a new device. Both are explained in details below.



STEP 3.1

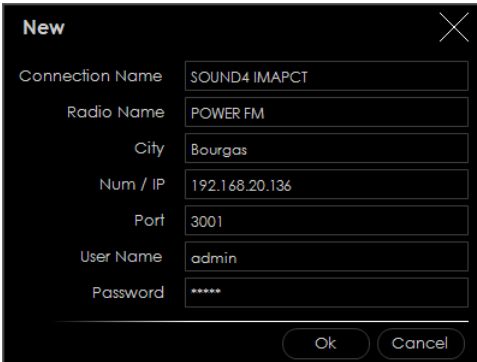
Scan interactive button

1. Press the [Scan] button;
2. A window with all network interfaces on the PC will appear. Select the IP address (the interface) on which the scan should be made, and press [Run Scan];
3. Wait until the scan is completed;
4. Upon completion, the Add Custom Network message will appear;
5. To add the device to the list, select the connection and press [OK];
6. The device will be added automatically (as depicted in **Step 3.2**). Double click on the icon will open the device's interface (**Step 3.3**). The default access credentials are user name: **admin** and password: **admin**.



STEP 3.2**Add Device manually**

1. Press the [New] button.
2. A new screen requiring the following information will appear:



The 'New' dialog box contains the following fields:

Connection Name	SOUND4 IMPACT
Radio Name	POWER FM
City	Bourgas
Num / IP	192.168.20.136
Port	3001
User Name	admin
Password	*****

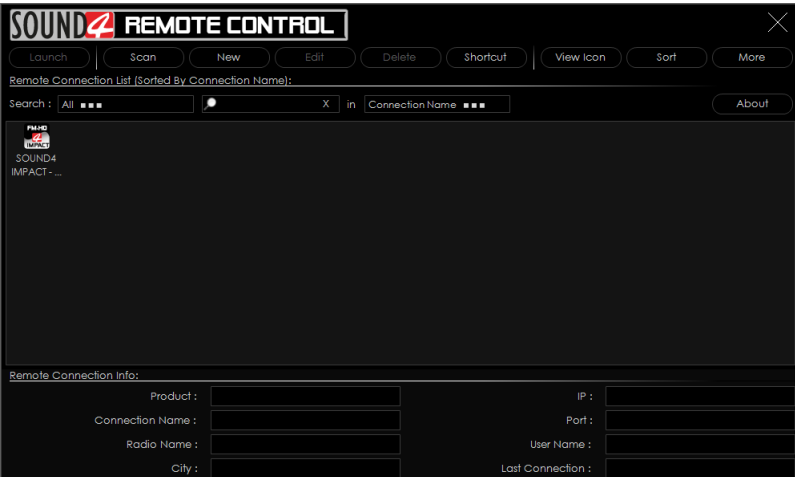
Buttons: Ok, Cancel

3. If you are not aware of SOUND4's IP address, it can be seen via the front panel. When the Main screen is on, press the soft button labeled [INFO]. Then using the [Up] and [Down] buttons navigate to IP (2/4) where the IP address of the device will be depicted.

NOTE: The numbers included in the IP Address must be written without leading zeros. For example: **192.168.020.136** must be written as **192.168.20.136**

4. Enter the required information. If not changed by the user, use the default value of the Port (3001). The username and password are as follows:
 - User name - admin;
 - Password - admin.

5. Press [OK]. A new device will be added. Double click on the newly added icon will open the control interface (**Step 3.3**).



The main interface features a menu bar with buttons: Launch, Scan, New, Edit, Delete, Shortcut, View Icon, Sort, More. Below the menu is a search bar and a list of connections. The 'Remote Connection List (Sorted by Connection Name):' shows one entry: SOUND4 IMPACT - ... with a small icon. At the bottom, the 'Remote Connection Info:' section contains fields for Product, Connection Name, Radio Name, City, IP, Port, User Name, and Last Connection.

STEP 3.3

Successful Log-in

A successful log-in the system will open SOUND4 IMPACT's main control window:



STEP 4

License Upload

There are two options of loading a new license/s. Both are explained in details below.

STEP 4.1

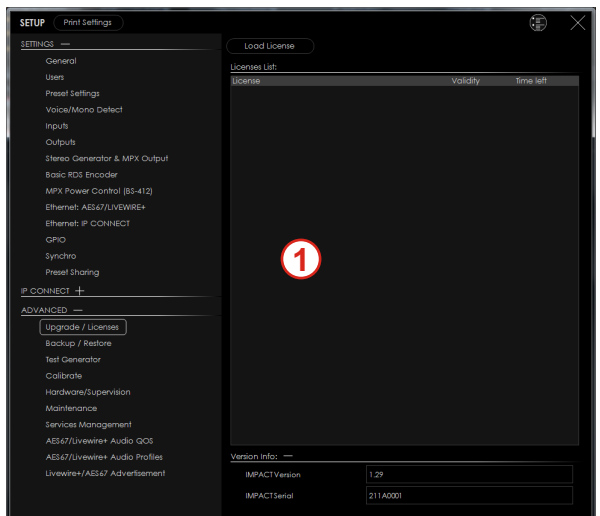
Expired License

If your license has expired, a warning message " Your main license has expired! Please contact SOUND4 for renew your main license" will appear on the screen

To upload a new license follow the steps listed below:

1. Press [OK]. The following screen will appear;
2. Press [License upload] and a new window requiring license file to be selected will open;
3. Go to the file directory, select the license and press [Open].

NOTE: All licenses are sent/provided in a ZIP file. It is not needed the file to be unzipped prior to their upload. They will be accepted by the program as they are.



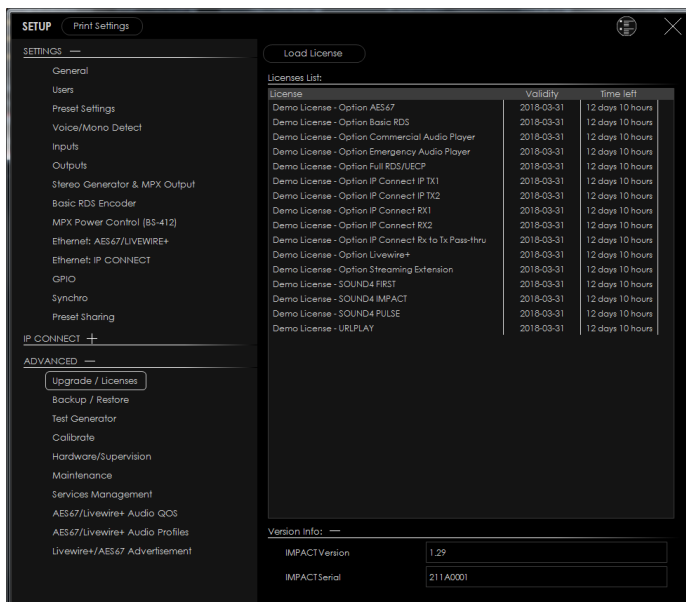
4. Wait until the licenses are loaded;
5. Once the process is completed, a notification message will appear:
6. Press [OK] and the Main control window will appear.



STEP 4.2

NEW License

1. Open the Main control window and click on [Setup]. The setup menu will appear;
2. Scroll down with the cursor to the ADVANCED settings and press Upgrade Licenses. The Following window will appear:



3. Press [Load Licenses];

4. Go to the file directory, select the license and press [Open].

NOTE: All licenses are sent/provided in a ZIP file. It is not needed the file to be unzipped prior to their upload. They will be accepted by the program as they are.

5. Wait while the licenses are loaded;

6. Once the process is completed, press [OK] and close the Setup window so that the Main control can appear.

STEP 5

Device basic set-up

If not already done that, connect all the additional cables to the device in order for it to be properly integrated into your existing network.

STEP 5.1

Inputs and Outputs Set-up

The basic set-up of the inputs and outputs can be easily made via the **I/O Routing and Levels** section of the Software.

The management section is placed on the left part of the screen and is divided in two parts - **Inputs to Patch Point Management (1)** and **Outputs to Patch Point Management (2)**. Both sections allow application of the inputs and outputs to be assigned as well as their range and levels.

1 Inputs to Patch Point Management

Type	Application	Process Input
Analog 1	Main	Main
Analog 2	2nd Backup	2nd Backup
Digital 1	1st Backup	1st Backup
Digital 2		
LIVEWIRE 1		
LIVEWIRE 2		
IP Conn 1		
IP Conn 2		
EPlayer		

2 Outputs to Patch Point Management

Type	Application	Replicate
Analog 1	Ana2 replicate jkhkjhk	Ana2
Analog 2	HD Out	
Digital 1	HD Out	
Digital 2	HD Out	
LIVEWIRE 1	HD Out	
LIVEWIRE 2	HD Out	
IP Conn 1	HD Out	
IP Conn 2	HD Out	
Stream	HD Out	

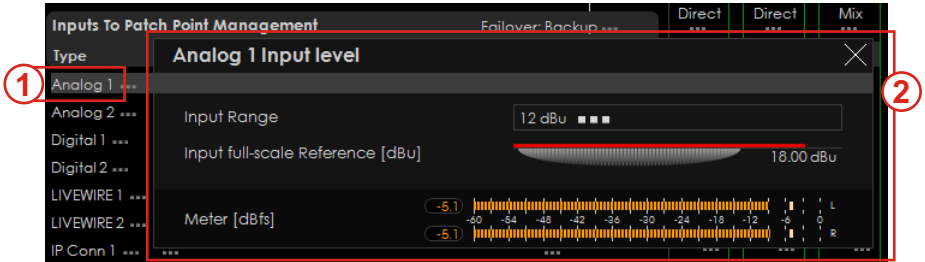
How loud you are in dB? Instantaneously you are at **1.11 dB**, On last minute Average you are at **1.58 dB**, You are using your processor smoothly!

The set-up process is different for each parameter, but quite simplified and explained in details below:

Inputs Set-up

1. Click on the name of the desired Input;
2. The respective set-up window will appear. Apply the desired settings and press [X]. The changes will be automatically saved.

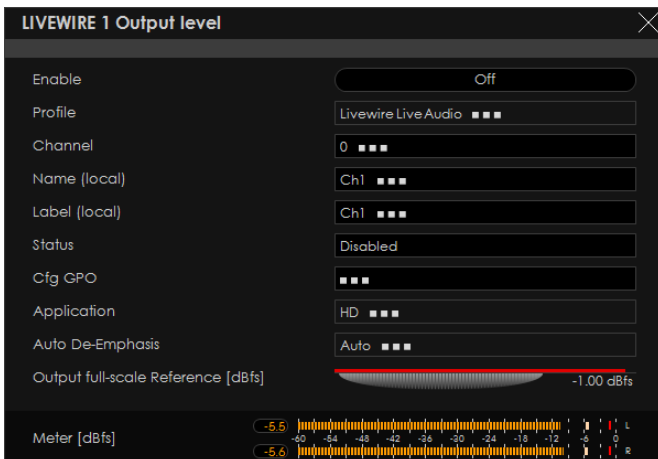
- For the **Analog inputs** - set Input Range and Input full-scale Reference:



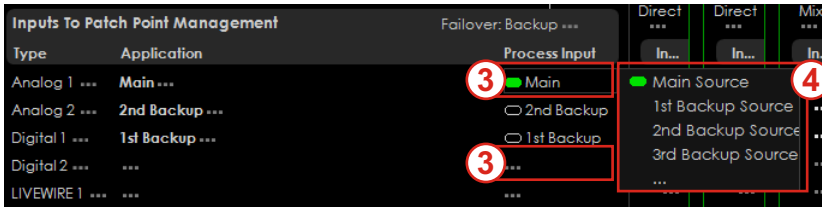
- For the **Digital Inputs** and the **Emergency Player Input level** - set Input full-scale Reference:



- For the **LIVEWIRE inputs** - Enable the input by selecting [ON] with a click, then select LAN mode by clicking on [LIVEWIRE ...], number of channels, From/To Source, Primary Source Name, Local Name, Stream mode, Status and Input full-scale Reference:



- To assign application of the Input, press on the **Process Input** label or on ... (if such is not assigned to the input);
- A window with the possible options will appear. Click on the one preferred and the window will disappear, automatically assigning the chosen value.



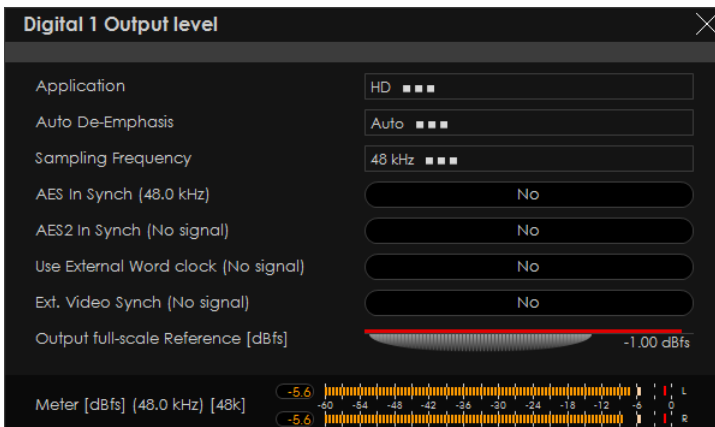
Outputs Set-up

- Click on the name of the desired Output;
- The respective set-up window will appear. Apply the desired settings and press [X]. The changes will be automatically saved.

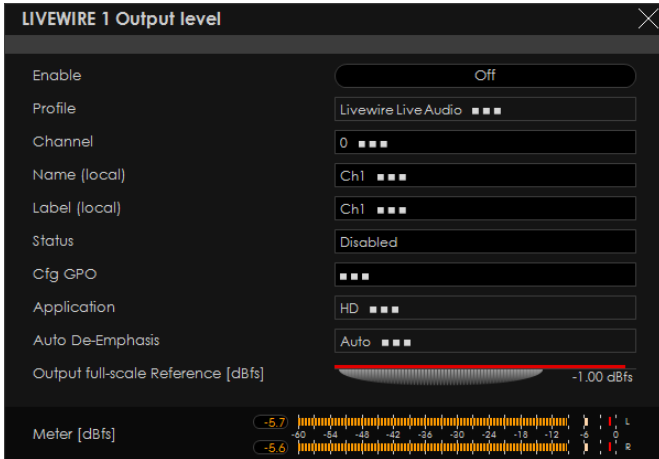
- For the **Analog Outputs** - set Output range, select Application from the drop-down menu, then Auto De-emphasis and Output full-scale Reference;



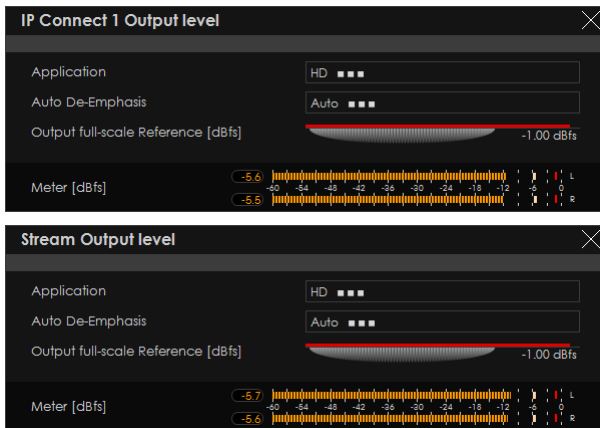
- For the **Digital Output level** - select Application from the drop-down menu, then Auto De-emphasis, Sampling Frequency, AES In Sync, AES 2 In Sync, Use External Word clock, Ext. Video Sync and Output full-scale Reference;



- For the **LIVEWIRE Output level** - Enable the output by selecting [ON] with a click, select profile by clicking on [Livewire Live Audio...], number of channels, Name, Label, Status, Configure GPO, select Application from the drop-down menu, then Auto De-Emphasis, and Output full-scale Reference.



- For the **IP Connect level** and **Stream Output level** - select Application from the drop-down menu, then Auto De-emphasis and Output full-scale Reference;

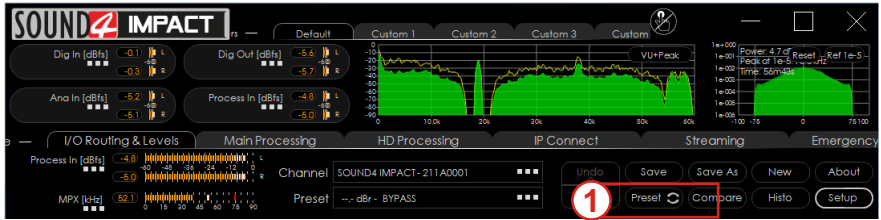


3. To assign Replicate of the Output, press on the Replicate label or on ... (if such is not assigned to the output);
4. A window with the possible options will appear. Click on the one preferred and the window will disappear, automatically assigning the value chosen.

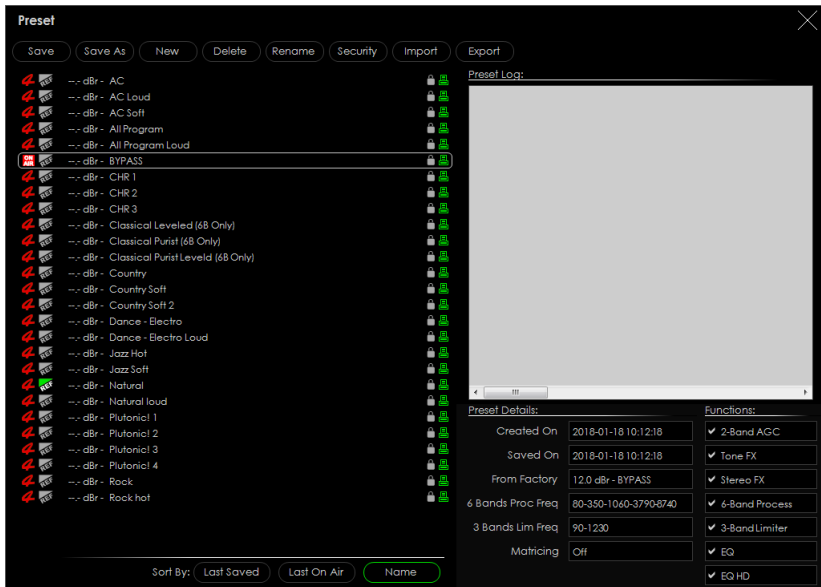


STEP 5.2**Presets Selection**

To select a preset, press on [Preset] button (1), and list of all presets will appear on the screen.



Double click on the desired preset will load it automatically to the device.



Thank you for choosing SOUND4!
If you need any assistance on our side, please visit: www.sound4.com