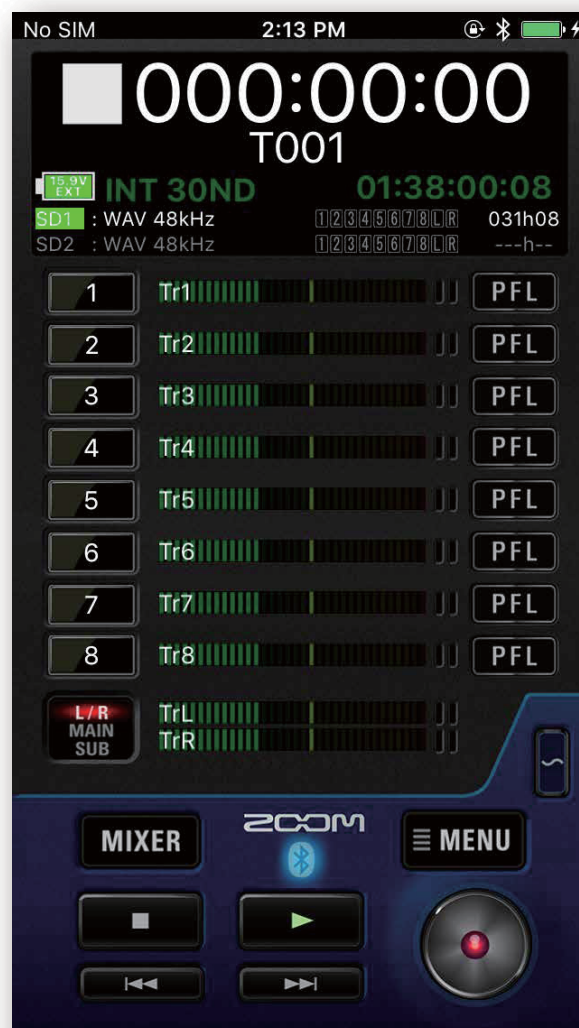


F8 Control Version 2.1

Operation Manual



Contents

| | |
|---|----|
| Introduction | 3 |
| Copyrights | 3 |
| Installing F8 Control | 3 |
| Pairing (connecting) with the recorder | 4 |
| Operation screen overview. | 5 |
| Navigation between screens | 5 |
| HOME screen | 6 |
| MIXER screen | 6 |
| Character input screen | 7 |
| Functions added in F8 Control Version 2.1 | 8 |
| Showing track names | 8 |
| Pop-up display function | 8 |
| F8 Control and an FRC-8 can be used at the same time | 9 |
| Compatibility with recorders | 9 |
| Preparing to record | 11 |
| Setting SD card for recording and recording file format | 11 |
| Recording | 12 |
| Selecting inputs | 12 |
| Linking inputs as a stereo pair | 12 |
| Adjusting input levels | 13 |
| Recording | 13 |
| Setting various functions related to recording | 14 |
| Changing recording take settings | 15 |
| Playing recordings. | 17 |
| Selecting a take for playback | 17 |
| Playing recordings. | 17 |
| Mixing takes. | 18 |
| Folder and take operations. | 19 |
| Opening the FINDER screen | 19 |
| Opening SD cards and folders | 19 |
| Working with folders and takes | 20 |
| Settings related to input signals. | 22 |
| Adjusting the input signal monitoring balance | 22 |
| Making individual track settings. | 23 |
| Settings related to output | 25 |
| Adjusting output levels. | 25 |
| Settings related to ambisonic recording | 26 |
| Making settings for ambisonic recording | 26 |
| Settings related to the auto mix function | 27 |
| Activating the auto mix function | 27 |
| Recording a slate tone. | 28 |
| Recording | 28 |
| Disabling the slate tone | 28 |
| Other functions | 29 |
| Setting the date and time | 29 |
| Viewing the F8 Control version | 29 |

Introduction

F8 Control is a remote control application designed for use with **zoom**® **F8** and **F8n** Multitrack Field Recorders (hereafter, "the recorder" in this manual). Including control of recording, playback and mixer adjustments, this app allows you to operate the recorder from an iOS device.

This manual does not explain operation of the recorder unit itself. See the **F8** / **F8n** Operation Manual for detailed information about all its functions.

Copyrights

iPad, iPhone, iPod, and iPod touch are trademarks of Apple Inc., registered in the U.S. and other countries.

Note: All trademarks and registered trademarks in this document are for identification purposes only and are not intended to infringe on the copyrights of their respective owners.

Installing F8 Control

- 1. Open the App Store on the iOS device and search for "F8 Control".**
- 2. Tap "GET" on the F8 Control screen.**

This will install F8 Control on the device.



NOTE

- F8 Control Version 2.1 can be used the following operating systems: iOS 9.0 or later.
- The first time that you launch F8 Control, you must pair it with the recorder that it will operate. (→ R4)

Pairing (connecting) with the recorder

The first time that you launch F8 Control, you must pair (connect) with the recorder to establish their relationship.

1. Start the recorder.

2. Press and hold  on the recorder.

A confirmation message appears on the display of the unit.

3. Use  to select "Yes", and press .

A six-character password will appear on the display.



4. Tap the F8 Control app icon.

F8 Control will launch, and a password input screen will appear.



5. Input the password.

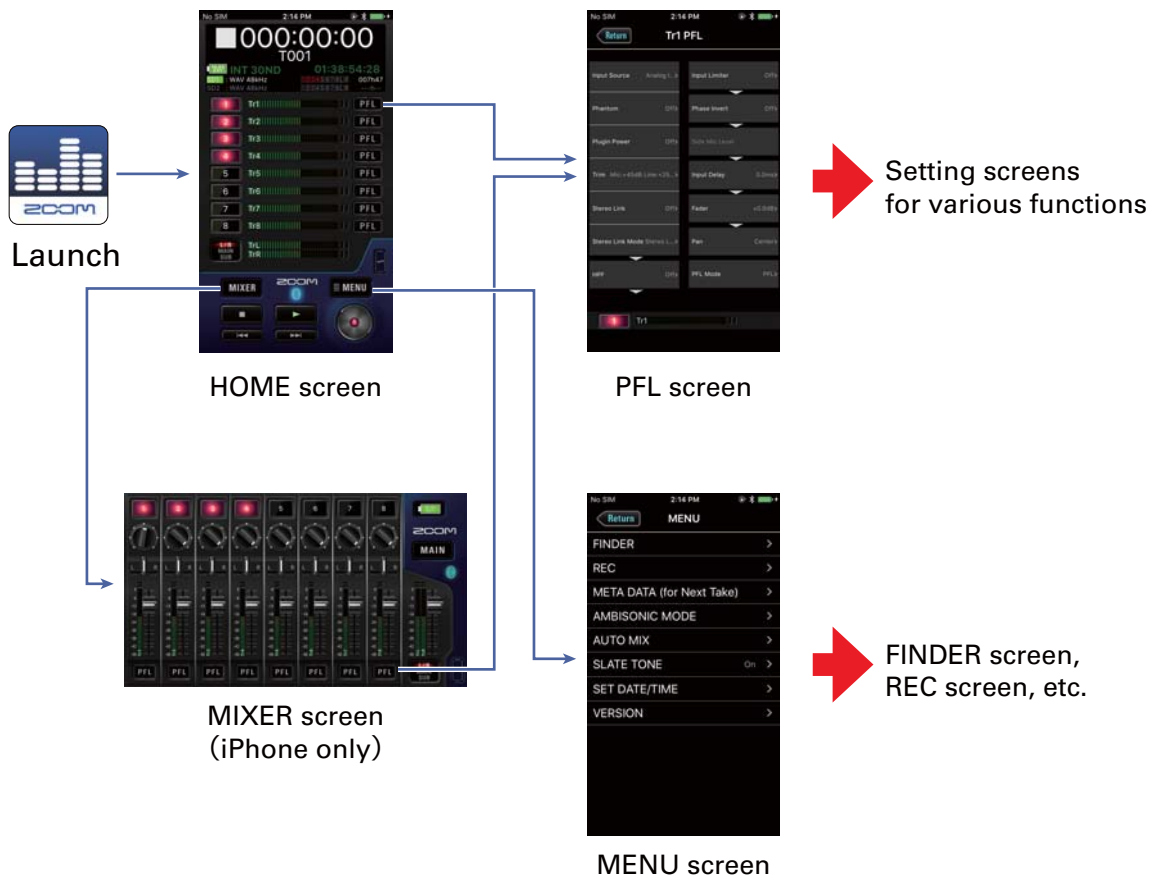
If the password matches the one on the recorder, the HOME screen will open.

NOTE

- If pairing is not successful, move the iOS device closer to the recorder or move both to a place where nothing interferes with radio waves and start F8 Control again. Confirm also that the Bluetooth function of the iOS device can be used.

Operation screen overview

Navigation between screens



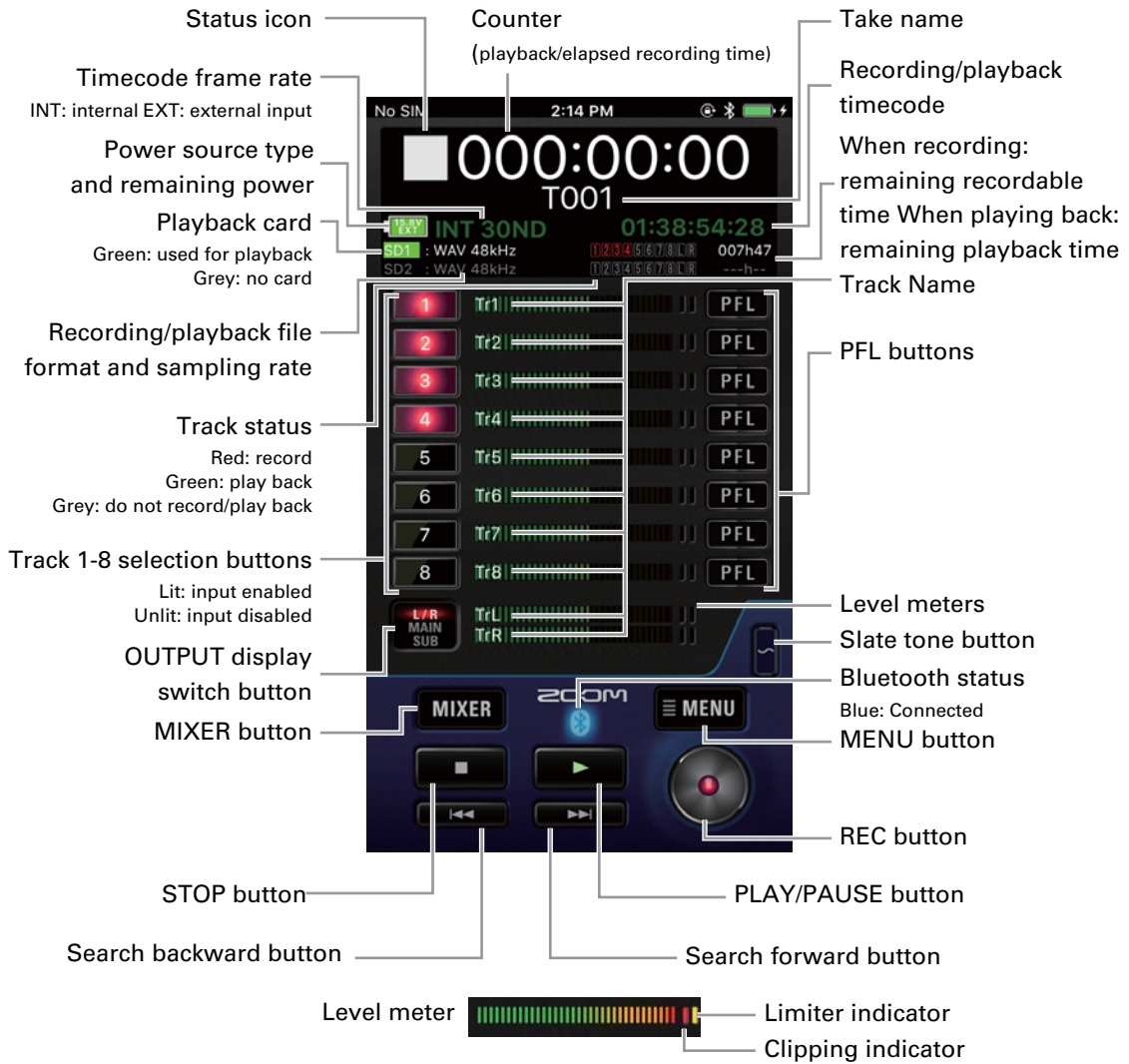
HOME screen (iPad version)

In the iPad version, all operations available on the MIXER screen are possible on the HOME screen. There is no separate MIXER screen.



HOME screen

When F8 Control launches, the HOME screen appears.



MIXER screen



Character input screen

The character input screen appears for inputting the names of takes and folders, for example.



1. Input characters using the keyboard.

The input characters appear in the text box.

NOTE

- The following characters can be input.
(space) ! # \$ % & ' () + , - 0 1 2 3 4 5 6 7 8 9 ; = @ A B C D E F G H I J K L M N O P Q R S T U V W
X Y Z [] ^ _ ` a b c d e f g h i j k l m n o p q r s t u v w x y z { } ~
Except when inputting a "Note", you cannot put an @ mark or a space at the beginning.

2. When done inputting, tap **Enter**.

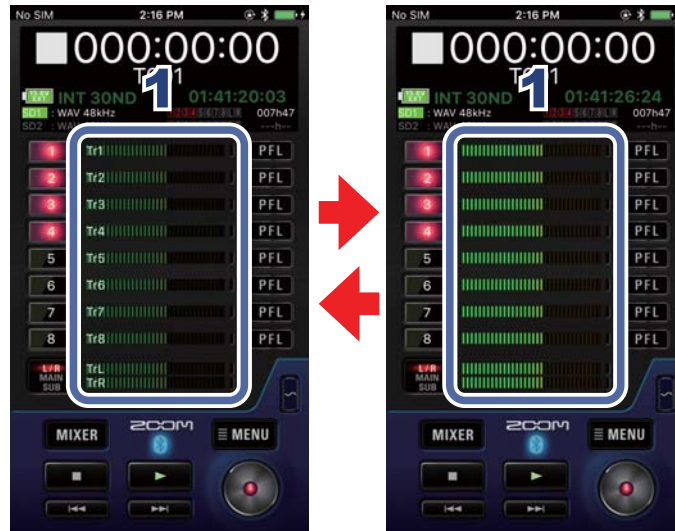
Confirm the input characters.

Tap **Return** to cancel the input.

Functions added in F8 Control Version 2.1

Showing track names

The name of each track can be shown in F8 Control Version 2.1.



1. Tap a level meter.

Tapping alternately shows or hides all the track names.

Pop-up display function

In F8 Control Version 2.1, pop-ups shown on the recorder are also shown on the F8 Control app.

Moreover, when a selection pop-up that shows YES/NO or other options appears, an option can be selected by tapping it.



F8 Control and an FRC-8 can be used at the same time

While F8 Control Version 2.1 is connected to a recorder, **FRC-8** can also be connected to the recorder and used at the same time.

When using F8 Control and an **FRC-8** at the same time, F8 Control functions as a monitor. For this reason, only the following F8 Control functions will be usable. Other functions will be disabled.

- OUTPUT display switch button
- MIXER button (iPhone only)
- MAIN button (iPhone only)
- Switching track name display on/off (→ P.8)

NOTE

- When the recorder is being used as an audio interface, the recorder cannot be connected with F8 Control.
- For details about using the **FRC-8**, see "Using an **FRC-8**" in the recorder manual.

Compatibility with recorders

The following functions can be used when F8 Control Version 2.1 is connected to an **F8** or **F8_n**.

F8_n

- It will function as F8 Control Version 2.1.
- All functions described in this manual can be used.
- While F8 Control Version 2.1 is in use, the iOS device will not enter sleep mode.

F8 Version 5.0

- It will function as F8 Control Version 2.1.
- All functions described in this manual can be used.
- While F8 Control Version 2.1 is in use, the iOS device will not enter sleep mode.

F8 Version 4.1 and earlier

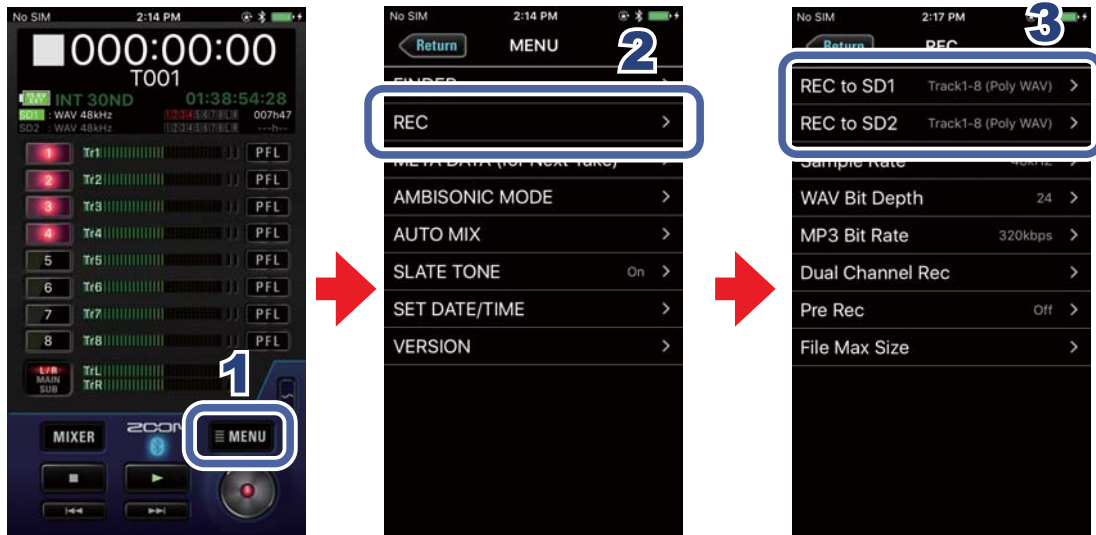
- It will function as F8 Control Version 1.0.
- The HOME screen track name display function and the F8 Control pop-up display function cannot be used.
- F8 Control and an **FRC-8** cannot be used at the same time.
- The following functions cannot be used on the MENU screen.
 - **Dual Channel Rec** (→P.14)
 - **Pre Rec** (→P.14)
 - **File Max Size** (→P.15)
 - **Scene Increment Mode** (→P.16)

- **Track Name (→P.16)**
 - **Take Name Format (→P.16)**
 - **AMBISONIC MODE (→P.26)**
 - **AUTO MIX (→P.27)**
- The following functions cannot be used on the PFL screen.
- **Input Source (→P.23)**

Preparing to record

● Setting SD card for recording and recording file format

The recording file format can be set independently for SD card slots 1 and 2.



1. Tap **MENU** on the HOME screen.
2. Tap "REC" on the MENU screen.
3. Tap "REC to SD1" or "REC to SD2" on the REC screen, and change the settings.

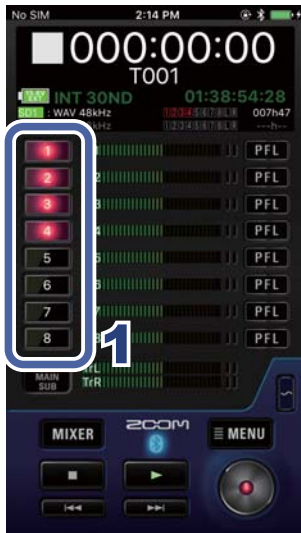
NOTE

- For details, see "Enabling recording on SD cards and setting file formats" in the unit's manual.

Recording

Selecting inputs

Select which among Inputs 1–8 to use.

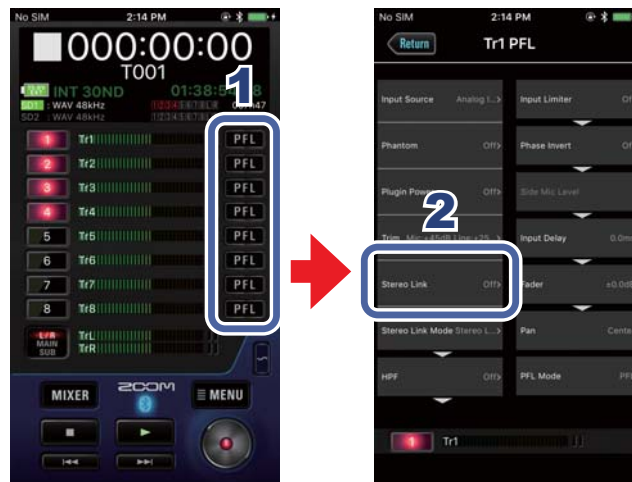


1. Tap the track selection buttons on the HOME screen for the inputs to record.

The buttons light red for the tracks that will be recorded and appear dark for those that will not be recorded.

Linking inputs as a stereo pair

You can use track pairs 1/2, 3/4, 5/6 and 7/8 as stereo tracks.



1. Tap **PFL** on the HOME screen for a track to link it in stereo.
2. Tap "Stereo Link" on the PFL screen, and change the setting.

NOTE

- For details, see "Selecting inputs and adjusting levels" in the unit's manual.

Adjusting input levels



1. Tap **MIXER** on the HOME screen.
On an iPad, skip this step.
2. On the MIXER screen (HOME screen on iPad), drag up/down the input trim knob for a track to adjust its level.



NOTE

- Double-tap an input trim knob to reset it to the default value.

Recording




1. Tap  on the HOME screen.

2. Tap  to start a new take when recording.

This will end the current take, start a new take and continue to record without interruption.

3. Tap  to pause.

Tap  again to restart recording.

4. Tap  to stop.

Setting various functions related to recording



1. Tap  on the HOME screen.

2. Tap "REC" on the MENU screen.

3. Tap a setting on the REC screen and change it.

▪ **Sample Rate**

Set the sampling rate used to record files.

▪ **WAV Bit Depth**

Set the bit depth of WAV files.

▪ **MP3 Bit Rate**

Set the bit rate of recorded MP3 files.

▪ **Dual Channel Rec**

Set the dual channel recording function to On/Off.

▪ **Pre Rec**

Set the pre-recording function, which captures audio before recording starts, to On/Off.

▪ File Max Size

Set the maximum size of recording files (Size).

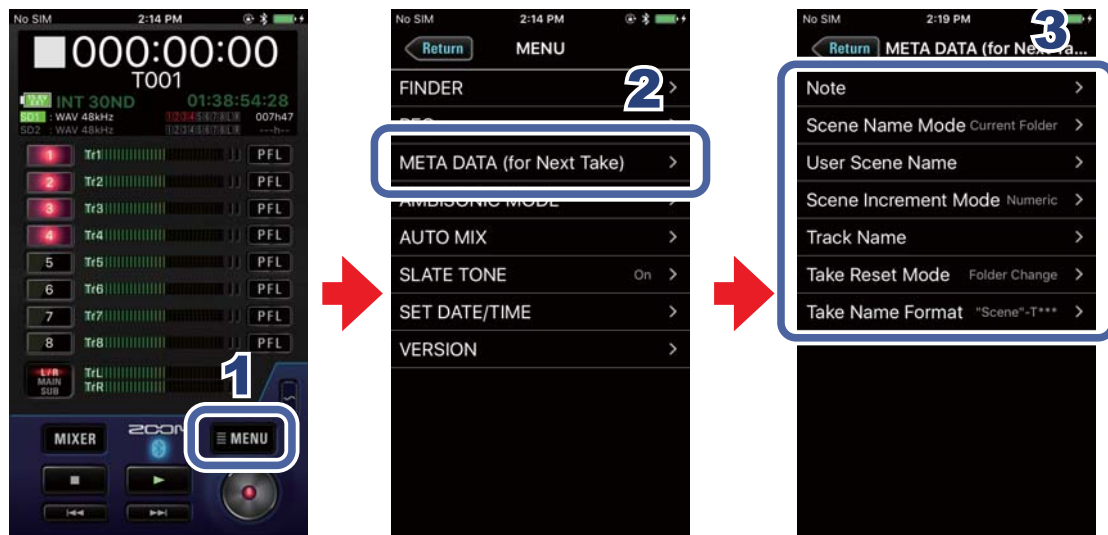
Set whether or not the total recording time shown on the HOME screen is reset when the maximum recording file size is reached (Time Counter).

NOTE

- For details, see the following sections in the unit's manual.
 - Setting the sampling rate (Sample Rate)
 - Setting WAV file bit depth (WAV Bit Depth)
 - Setting MP3 file bit rate (MP3 Bit Rate)
 - Simultaneously recording tracks at different levels (Dual Channel Rec)
 - Capturing audio before recording starts (Pre Rec)
 - Maximum file size (File Max Size)
 - Showing total recording times for long recordings (Time Counter)

Changing recording take settings

You can change the recording take scene name, for example.



1. Tap **MENU** on the HOME screen.
2. Tap “META DATA (for Next Take)” on the MENU screen.
3. Tap a setting and then change it.

▪ Note

Input characters for a note to use as metadata in the next take recorded.

▪ Scene Name Mode

Set how the scene name will be assigned (mode) to the next take recorded.

▪ **User Scene Name**

If Scene Name Mode is set to User Name, set the scene name used here.

▪ **Scene Increment Mode**

Set how the scene name number will be advanced for the next take recorded.

▪ **Track Name**

Edit the track name used for the next take recorded.

▪ **Take Reset Mode**

Set the conditions to reset the name that will be given to the next take recorded.

▪ **Take Name Format**

Set the name format used for the next take recorded.

NOTE

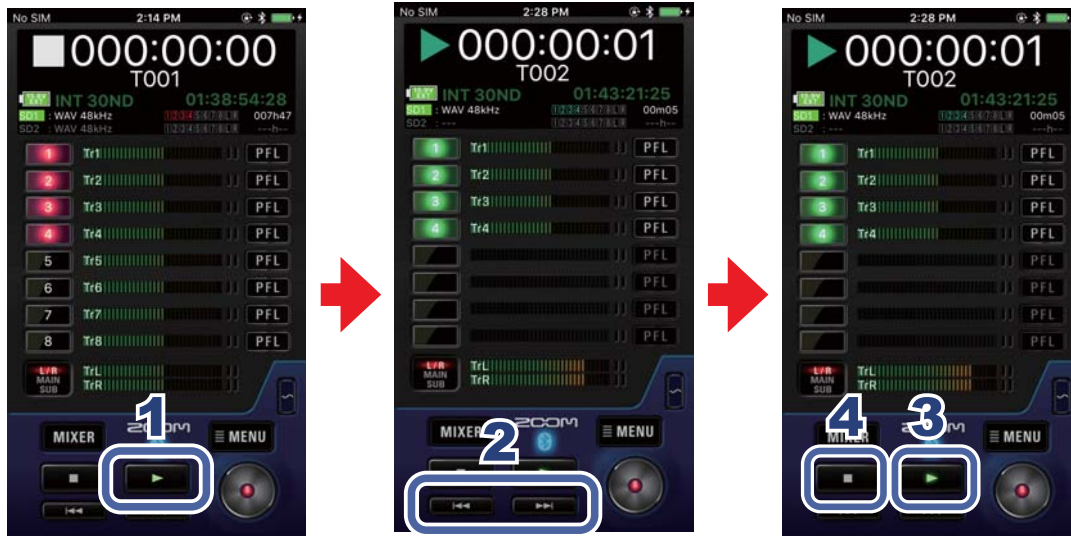
- For details, see "Recording take settings" in the unit's manual.

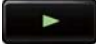







Playing recordings

Selecting a take for playback

1. Use  and  on the HOME screen.
Doing this changes the playback take.



Playing recordings



1. Tap  on the HOME screen.
2. Touch and hold  to search forward, and touch and hold  to search backward.
Tap  and  to jump to marks.
3. Tap  to pause.
Tap  again to restart playback.
4. Tap  to stop.

Mixing takes



1. Tap  on the HOME screen.
2. Tap .

On an iPad, skip this step.
3. Adjust parameter settings on the MIXER screen (HOME screen on iPad).

Adjusting pan faders



Drag a pan fader left and right to adjust its value.

NOTE

- Double-tap a pan fader to reset it to the default value.

Adjusting level faders




Drag a level fader up and down to adjust its value.

NOTE

- Double-tap a level fader to reset it to the default value. If already set to its default value, doing this mutes the track.

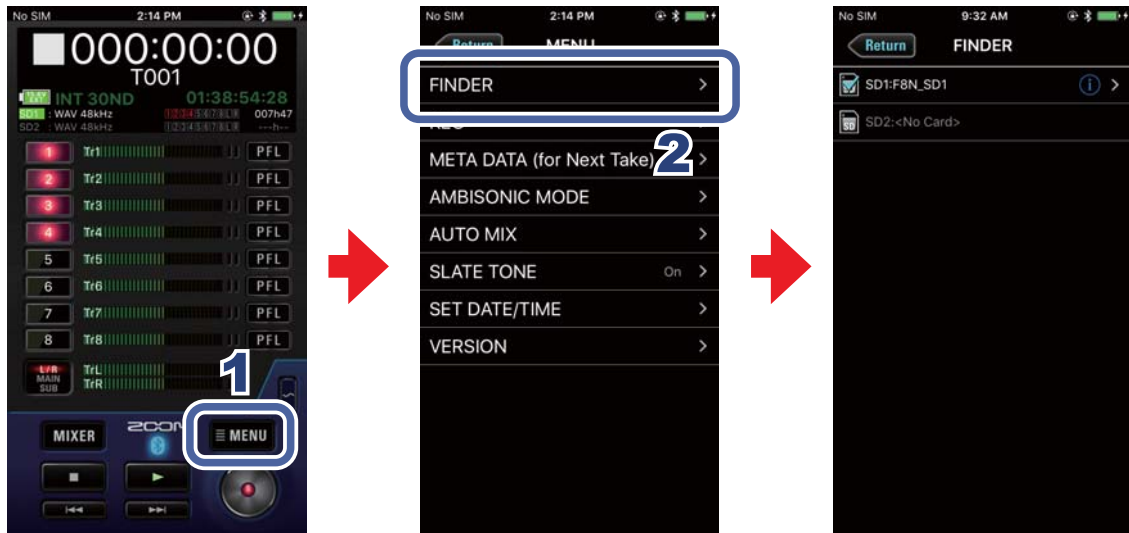
NOTE

- If you tap  to switch to L/R, you can change the L/R level.

Folder and take operations

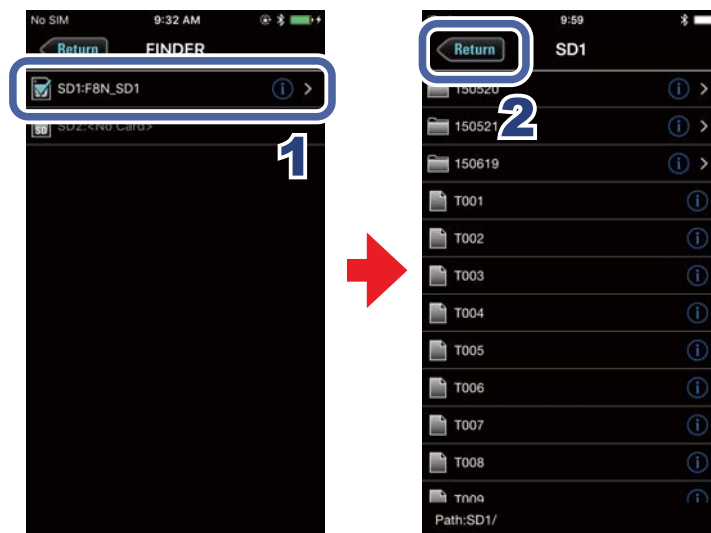
Opening the FINDER screen

Check and edit folders and takes on SD cards in the recorder on the FINDER screen.



1. Tap **MENU** on the HOME screen.
2. Tap "FINDER" on the MENU screen.

Opening SD cards and folders



1. On the FINDER screen, tap the name of the SD card or folder that you want to open.

A list of folders and takes inside that SD card/folder is shown.

2. Tap **Return** to move up one level.

Working with folders and takes

When working with folders and takes, you can check their information, change their names and edit their metadata.



- To work with a folder/take, tap the **i** to the right of its name.**
This opens the OPTIONS screen where you can check the following information.

Explanation of information shown

| Selected item | Data item name | Description |
|---------------|---|--|
| SD card | Free Size Remain | Open space Size Remaining recordable time |
| Folder | Path Date Time | Folder path Date created Time created |
| Take | Path TC FPS Len Fmt Date Time Size Side Mic Level | Take path Timecode Frame rate Length Recording format Date created Time created Size Mid-side side mic level |

2. Tap an item to change its setting or work with it.

▪ **Select**

Use this procedure to select the folder that contains the take to be played back or the folder to use for recording takes, and return to the HOME screen.

NOTE

- The first take inside the selected SD card or folder will be set as the playback take.

▪ **Rename**

Change the folder or take name. See "Character input screen" (→ P.7) for how to input characters.

▪ **Meta Data Edit**

Check and edit take information (metadata).

NOTE

- For details, see "Checking and editing take metadata" in the unit's manual.

Settings related to input signals

Adjusting the input signal monitoring balance



1. Tap **MIXER on the HOME screen.**

On an iPad, skip this step.

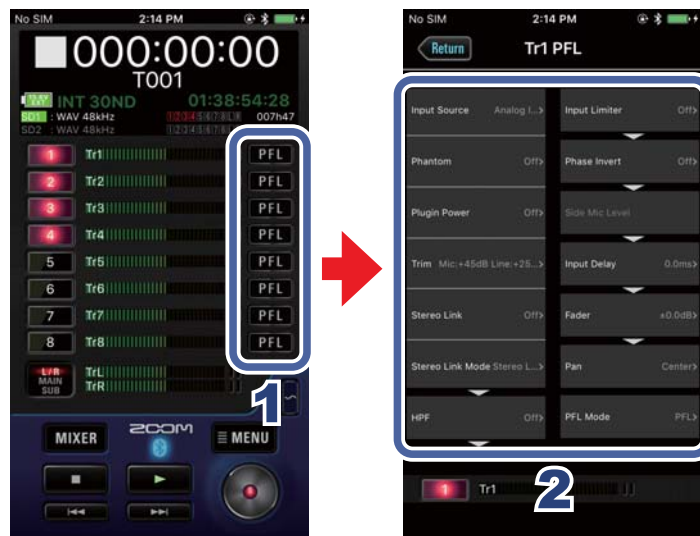
2. Adjust the parameter settings.

NOTE

- See "Mixing takes" for how to make adjustments. (→ P.18)
- These volume and pan settings only affect the monitoring signals. They have no effect on recorded data.
- If you tap **L/R MAIN SUB** to switch to L/R, you can change the L/R level.

Making individual track settings

Use the PFL screen to make settings for individual tracks.



1. Tap **PFL on the HOME screen for the track to set.**

This opens the PFL screen.

2. Tap the setting to change on the PFL screen and change it.

▪ **Input Source**

Set the input source of each track.

▪ **Phantom**

Phantom power can be turned on/off and it is voltage set for each input separately.

▪ **Plugin Power**

Make this setting when a mic that is compatible with plug-in power is connected to the mic capsule MIC/LINE input jack.

▪ **Trim**

This adjusts the input level.

▪ **Stereo Link**

This sets the stereo linking of the input.

▪ **Stereo Link Mode**

Signals from a mid-side format stereo mic input through stereo-linked tracks are converted to an ordinary stereo signal.

▪ **HPF**

The high pass filter can cut low frequencies to reduce the sound of wind, vocal pops and other noise.

▪ **Input Limiter**

The limiter can prevent distortion by controlling input signals that have excessively high levels.

▪ **Phase Invert**

The phase of the input signal can be inverted.

▪ **Side Mic Level**

You can adjust the side mic level (stereo width) before recording for tracks that use a mid-side mic capsule.

▪ **Input Delay**

If there are differences in the timing of input sounds, use this function to correct them when recording.

▪ **Fader**

Adjusts the level of the input signal.

▪ **Pan**

Adjusts the stereo balance of the sound.

▪ **PFL Mode**

On the PFL screen, you can set the monitoring sound to be either pre-fader listening (PFL) or post-fader solo (SOLO).

NOTE

- For details, see the following sections in the unit's manual.
 - Setting the input source (Input Source)
 - Changing the phantom power settings (Phantom)
 - Changing the plugin power setting (Plugin Power)
 - Selecting inputs and adjusting levels
 - Converting mid-side input to ordinary stereo (Stereo Link Mode)
 - Cutting low-frequency noise (HPF)
 - Input limiter
 - Inverting the input phase (Phase Invert)
 - Adjusting the side level of a mid-side mic capsule (Side Mic Level)
 - Delaying input signals (Input Delay)
 - Setting the monitoring volume on the PFL screen (PFL Mode)

Settings related to output

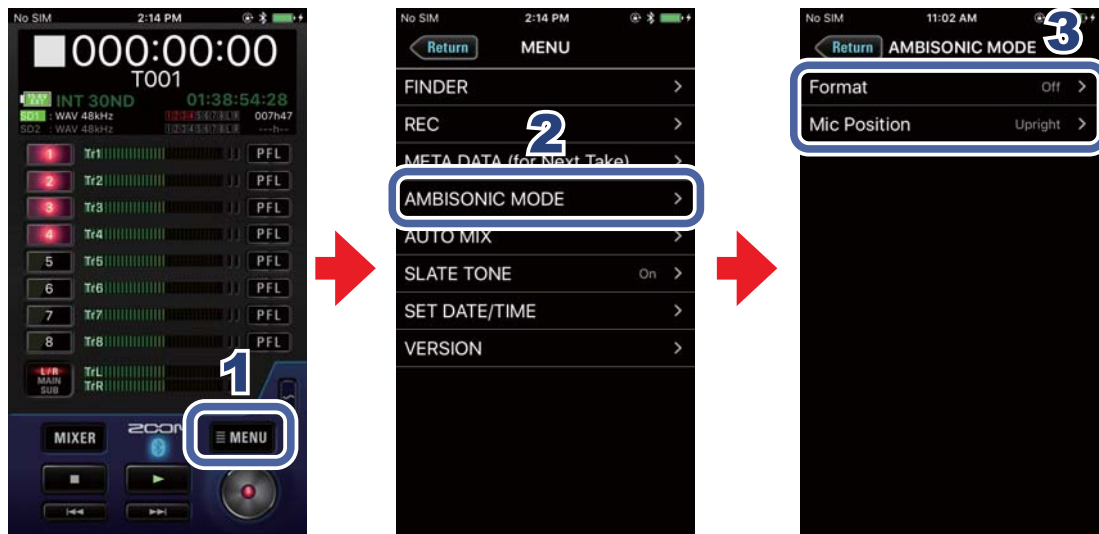
Adjusting output levels



- 1.** Tap **MIXER** on the HOME screen.
On an iPad, skip this step.
- 2.** On the MIXER screen (HOME screen on iPad), tap **MAIN** to switch to the MAIN or SUB screen.
- 3.** Drag output level faders up and down to adjust their levels.

Settings related to ambisonic recording

Making settings for ambisonic recording



1. Tap **MENU** on the HOME screen.
2. Tap “AMBISONIC MODE” on the MENU screen.
3. Tap a setting on the AMBISONIC MODE screen and change it.

- **Format**

Set the ambisonic recording format.

- **Mic Position**

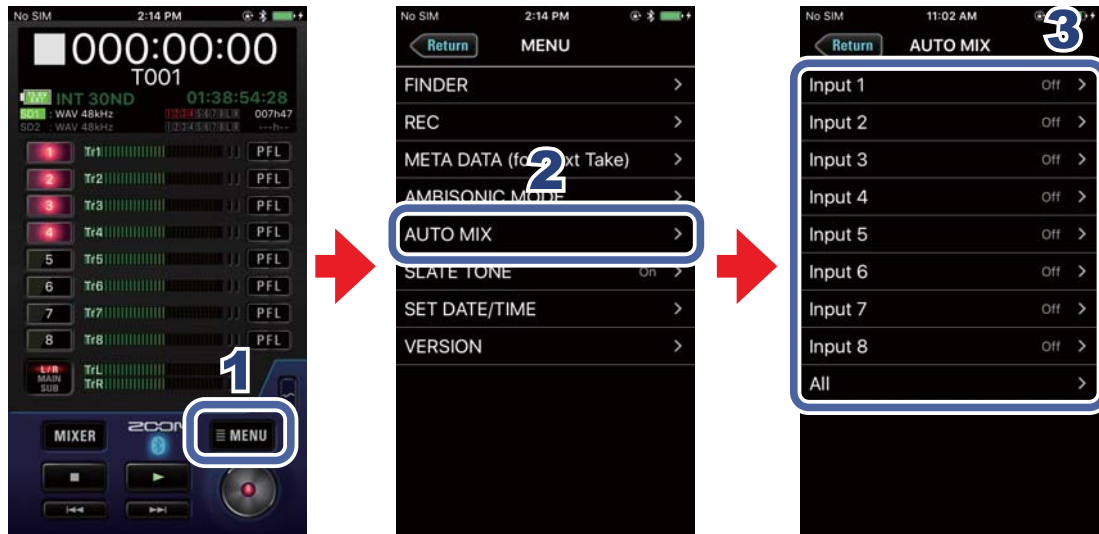
Set the mic position used for ambisonic recording.

NOTE

- For details, see the following sections in the unit’s manual.
 - Setting the format of Ambisonic Mode
 - Setting the mic position used for ambisonic recording (Mic Position)

Settings related to the auto mix function

Activating the auto mix function



1. Tap **MENU** on the HOME screen.
2. Tap "AUTO MIX" on the MENU screen.
3. Tap input tracks on the AUTO MIX screen to enable the auto mix function for them.

NOTE

- Select All to set all the tracks at the same time.
- For details, see the following sections in the unit's manual.
Changing the automatic mixing setting (Auto Mix)


Recording a slate tone

Recording



By adding a slate tone when the recording starts, aligning it to a video file during editing will be easier.




1. Tap  on the HOME screen.

2. Tap  on the HOME screen.

NOTE

- If you touch and hold  for one or more seconds, slate tone input will be enabled until you disable it by tapping  again.

Disabling the slate tone

You can set the slate tone so that it will not be enabled if  is accidentally pushed.

1. Tap  on the HOME screen.

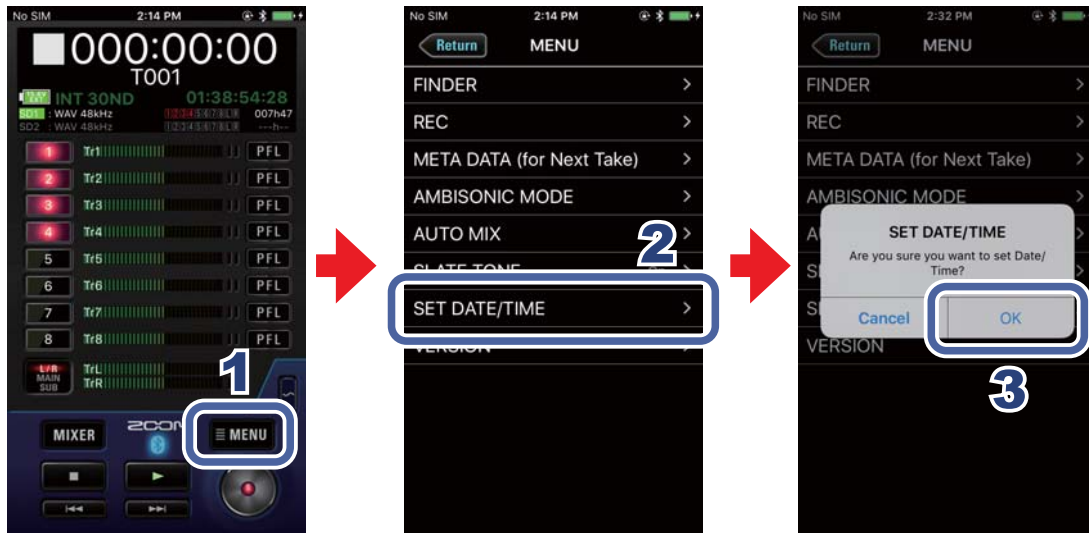
2. Tap "SLATE TONE" on the MENU screen.

3. Tap "Off (Lock)" on the SLATE TONE screen.

Other functions

Setting the date and time

The recorder date and time can be set to the system clock values of the iOS device.



1. Tap **MENU** on the HOME screen.
2. Tap "SET DATE/TIME" on the MENU screen.
3. Tap "OK" on the confirmation pop-up.
This completes setting the recorder date and time.

Viewing the F8 Control version

You can check the F8 Control version.

1. Tap **MENU** on the HOME screen.
2. Tap "VERSION" on the MENU screen.



ZOOM CORPORATION

4-4-3 Kanda-surugadai, Chiyoda-ku, Tokyo 101-0062 Japan

<http://www.zoom.co.jp>