

SONIFEX

CM-TBT

Dual PSTN Telephone Hybrid

CM-TBG

Dual GSM Interface

2016

Catalogue





CM-TB8T Talkback Control Unit, CM-TB8 with CM-TBT Dual PSTN Telephone Hybrid



Category: Talkback & Commentary.

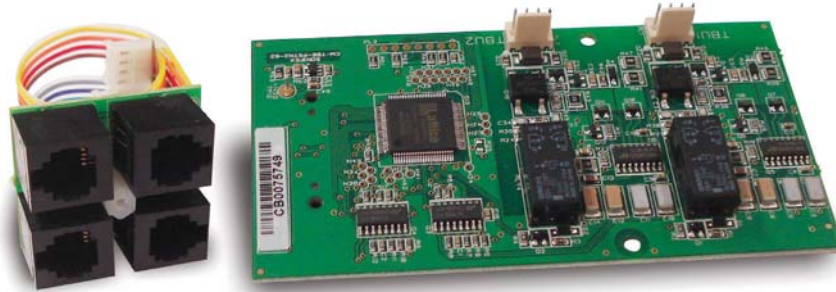
Product Function: Talkback controller with dual PSTN comms.

Typical Applications: Ideal in an OB van/

truck or small production gallery where talkback is needed to a remote location, or other country.

Features:

- Two independent telephone hybrids.
- Ethernet & front panel control.
- Auto-answer & auto disconnect.
- 8 Speed dials available.
- IFB on telephone channels.



CM-TBT Dual PSTN Card For the CM-TB8T.

The CM-TB8T is the CM-TB8, 8 Channel Talkback Control Unit, with the CM-TBT add-in card fitted.

The CM-TBT is a dual PSTN, telephone hybrid expansion card. It extends the talkback capability of the CM-TB8 by allowing telephone calls to be made and

received on two independent analogue direct exchange or PSTN lines.

The hybrids are fully configurable and are easy to setup via the CM-TB8 embedded web server. Simply select your location from a country code list to automatically configure the telephone interface for local

line conditions. This setting also configures the relevant auto disconnect mode which can be enabled if required. An option to auto answer an incoming telephone call can also be enabled.

Calls can be made and received by using an external telephone handset connected to each hybrid channel, or directly on the CM-TB8 using the channel controls. Each hybrid can independently speed dial one of the 8 user defined telephone numbers stored on the unit.

IFB modes are fully supported on the telephone channels allowing selected signals to be routed to a connected telephone call.

Specification For CM-TB8T

Bandwidth to Telephone Line:	125Hz – 3.6kHz, -3dB ref 1kHz
Telephone Line Impedance:	Nominally 600Ω - complex impedances set via country code
Telephone Line Impedance Range:	300Ω to 1500Ω
Connections:	2 x RJ11 Socket – line 2 x RJ11 Socket – handset
CM-TBT :	Add-in card for CM-TB8 with 2 x telephone hybrids.
CM-TB8T:	CM-TB8 including CM-TBT.
Physical Specification	
Dimensions (Raw):	15cm (W) x 10cm (D) x 3cm (H) 5.9" (W) x 3.9" (D) x 1.2" (H)
Dimensions (Boxed):	22.9cm (W) x 12.7cm (D) x 7.6cm (H) 9.0" (W) x 5.0" (D) x 3.0" (H)
Weight:	Nett: 0.2kg Gross: 0.3kg Nett: 0.4lbs Gross: 0.7lbs



CM-TB8T PSTN Configuration Page.



CM-TB8T Channels Config Page.



CM-TB8G Talkback Control Unit, CM-TB8 with CM-TBG Dual GSM Interface



Category: Talkback & Commentary.

Product Function: Talkback controller with dual GSM comms.

Typical Applications: Ideal in an OB van/

truck or small production gallery where talkback is needed from a remote location, or to staff in a remote location.

Features:

- Two separate quad band GSM circuits.
- Ethernet & front panel control.
- Auto-answer & auto disconnect.
- 8 Speed dials available.
- IFB on GSM channels.

The CM-TB8G is the CM-TB8, 8 Channel Talkback Control Unit, with the CM-TBG add-in card fitted.

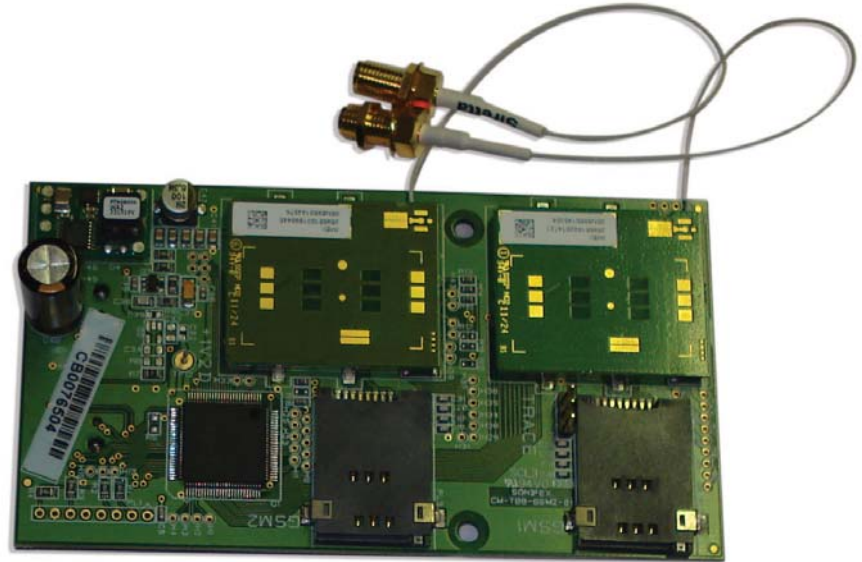
The CM-TBG is a dual GSM telephone expansion card. It extends the talkback capability of the CM-TB8 by allowing mobile telephone calls to be made and received via two independent quad band mobile telephone modules.

The GSM modules are configured via the CM-TB8 embedded web server. This provides access to features including network selection, telephone number storage and phone logs. Each module has its own internal SIM card slot and separate antenna connection which is mounted on the rear panel of the CM-TB8.

Telephone calls are made and received using the embedded web server or directly using the channel controls. The CM-TB8 can store 8 telephone numbers and each channel can speed dial the required number.

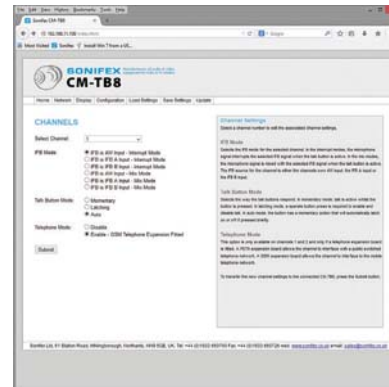


CM-TB8G GSM Configuration Page.



CM-TBG Dual GSM Card for the CM-TB8G.

IFB modes are fully supported on the telephone channels allowing selected input signals to be routed to a connected telephone call.



CM-TB8G GSM Enable Page.

Specification For CM-TB8G

Module Type:	Quad-Band EGSM 850 / 900 / 1800 / 1900MHz
Output Power:	Class 4 (2W) @ 850 / 900MHz Class 1 (1W) @ 1800 / 1900MHz
Sensitivity:	-107 dBm (typ.) @ 850 / 900MHz -106 dBm (typ.) @ 1800 / 1900MHz
Approvals:	Fully type approved conforming to R&TTE, CE, GCF, FCC, PTCRB, IC, Anatel
Connections:	2 x SMA Socket – antenna
CM-TB8 :	Add-in card for CM-TB8 with 2 x GSM line.
CM-TB8G :	CM-TB8 including CM-TBG.

Physical Specification

Dimensions (Raw):	15cm (W) x 10cm (D) x 3cm (H) 5.9" (W) x 3.9" (D) x 1.2" (H)
Dimensions (Boxed):	22.9cm (W) x 12.7cm (D) x 7.6cm (H) 9.0" (W) x 5.0" (D) x 3.0" (H)
Weight:	Nett: 0.2kg Gross: 0.3kg Nett: 0.4lbs Gross: 0.7lbs

SONIFEX

www.sonifex.co.uk

UK Office:

Sonifex Ltd

61 Station Road, Irthlingborough,

Northants, NN9 5QE, UK

Tel: +44 (0) 1933 650700

Fax: +44 (0) 1933 650726

Email: sales@sonifex.co.uk

Australian Office:

Sonifex Pty Ltd

12/6 Leighton Place,

Hornsby NSW 2077, Australia

Tel: +61 (2) 9987 0499

Fax: +61 (2) 9476 4950

Email: sales@sonifex.com.au