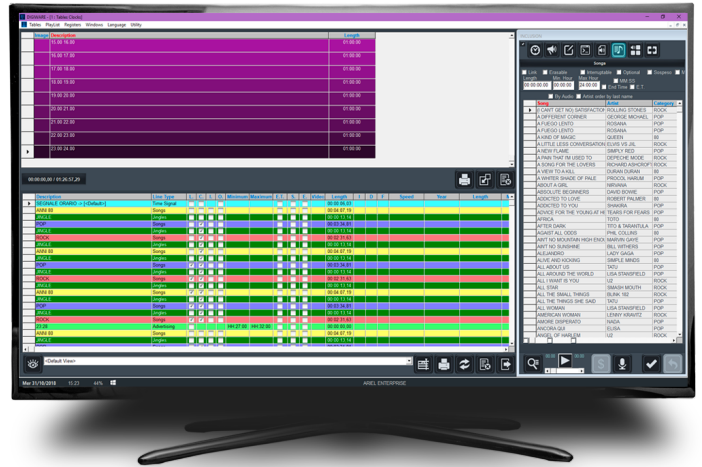


Digiware TV



High-end Multi-programming

DIGIWARE TV is the multi-channel TV Scheduling software for clips, programs, live events and feed from any source.

Playlist and schedule can be generated for a specific day as for long period (week and month).

The schedule may include automated commands to control connected devices (routing switcher, VTR, Cart Machine, ..) and graphics (static and animated logos, tickers titles, crawls, etc ...).



Plan and Play

DIGIWARE TV allows the fast generation of playlists and the sharing/management of the archive by multiple users for multiple channels (user right management).

Playlists are automatically generated according to scheduling rules and templates that are user definable and customizable.

Preview of the clips included in the playlist straight from the PC with no need of additional hardware that allows the operator to make easy editing of the clip (trimming, associate graphics).

Designed to be interfaced with any TV Automation, **DIGIWARE TV** is a quick, effective way to get the job done. Schedules can be modified in real time up to a few seconds before broadcasting.

DIGIWARE TV merges the advertising scheduling coming from RAM-COMM with the daily playlist.

DIGIWARE TV includes comprehensive report generation and statistics.

The software is an innovative and effective solution even when it comes to high-end multi-programming, when several TV stations possibly distributed over many commercial split-zones must be programmed

daily and/or at the same time.



Main Features

- ☑ Scalable solution for TV playlist control
- ☑ Multiple channel and multiple users
- ☑ Long term scheduling: days, weeks, months
- ☑ One button publishing:
- ☑ Real-time playout update
- ☑ Media archive browsing and preview in full resolution and proxy
- ☑ Built-in capture and file import
- ☑ Editing tools for trimming, aspect ratio and audio level adjustment

- ☒ File format conversion tool
- ☒ Management of series and episodes
- ☒ Policies for parental control
- ☒ Pre-schedule/templates and rules for automatic playlist generation
- ☒ Frame accurate playlist with exact time control
- ☒ Drag and drop of clips and portion of playlist
- ☒ Schedule of feeds and sources (SAT, Live, VTRs)
- ☒ Schedule of commands (Routing Switch, recorders, GPI)
- ☒ Schedule of graphics and logos for single clip or playlist
- ☒ Metadata export for music program and subtitle
- ☒ Merge of advertising scheduling
- ☒ Management of fillers and emergency contents
- ☒ VOD automation
- ☒ Alert system for invalid clip, missing media and rules violation/conflict
- ☒ EPG generation
- ☒ Media Asset Management such as XMAM
- ☒ Automatic As Run Log and playlist reconciliation.
- ☒ Detailed report and statistics
- ☒ User Rights Management