

# XTV Suite



## One for all, all for one

**XTV Suite** is a professional complete set of software tools for TV Broadcast Automation which manages video capture, trimming, scheduling and playout. Completely automatic and unattended efficiency 24/7.

**XTV** is perfect for TV stations, Satellite Channels, Cable TV, News Room, Web TV, CCTV, Corporate TV, Presentation, hotel pay TV channels, museums info channels and video wall display, which can take advantage of its user-friendly interface.

**XTV Channel In A Box (CIAB)** architecture guarantees a linear scalability of your TV Playout facility.



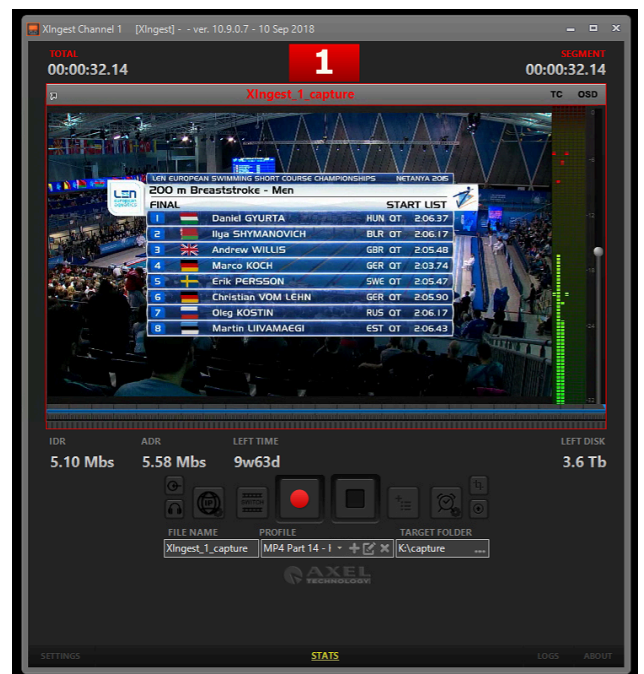
## Designed to achieve a **true universal format** compatibility

At the same time, multi-channel TV stations and TV networks can enjoy **XTV's** scalable structure and universal file compatibility. **XTV** is designed to achieve a true 'universal format' compatibility. **XTV** ties together all production departments allowing direct playout of DV, HDV, MPEG-2, MPEG-4, H.264, H.265, QuickTime, AVI, MXF, XDCAM, PRORES, DNxHD, GXF, LXF, etc, in any resolution or framerate with automatic adaption.



XTV Suite is able to satisfy those customers looking for second generation CIAB - Channel In A Box, able to provide traditional playout deployment reliability and functionalities with the typical CIAB TCO.

**Media compatibility and multiformat benefits**



XTV plays out any kind of media in any resolution:

DV, HDV, MPEG-2, MPEG-4, MPEG-1, H.264, QuickTime, MXF, XDCAM, PRORES, DNXHD, GXF, LXF, etc.

XTV allows to play and mix any media format according to broadcaster's production workflow and pros and cons of each AV codec.

Hardware Compatibility: BlackMagic, AJA, BlueFish

Dynamic Playlist: Real time playlist management without black frames nor freezes.

Advanced Scheduler: Unlimited playlist length with automatic clip skipping and cutting when late.

Duration stretching when ahead of time. Sequence loop.

Automatic filler insertion for gap handling.

Log Report: Status and playout logging, with XML export for easy processing and printing.

No Database: Metadata is saved directly into media file, allowing file rename, copying and moving.

## XTV Suite include

XPlayout > 24/7

Automation

XIngest > real-time

capture from SDI-NDI-IP

**Additional software modules  
not included in XTV Suite**

**XMirror > Playlist media**

cache copier

**XMusic > Automatic**

musical playlist creator

## Free apps

**XTrimmer > Metadata injector and**

quality control

**XScheduler > Offline playlist**

management

**CGComposer > CG template creator**

**XLogsViewer > As run logs viewer**

**XInfo > Playlist information display**

**XRouter > Routing switcher sharing on**

LAN

**XRemote > Remote control or routing**

switcher

**XEmergency > N+1 playout**

redundancy (needs xplayout licence)

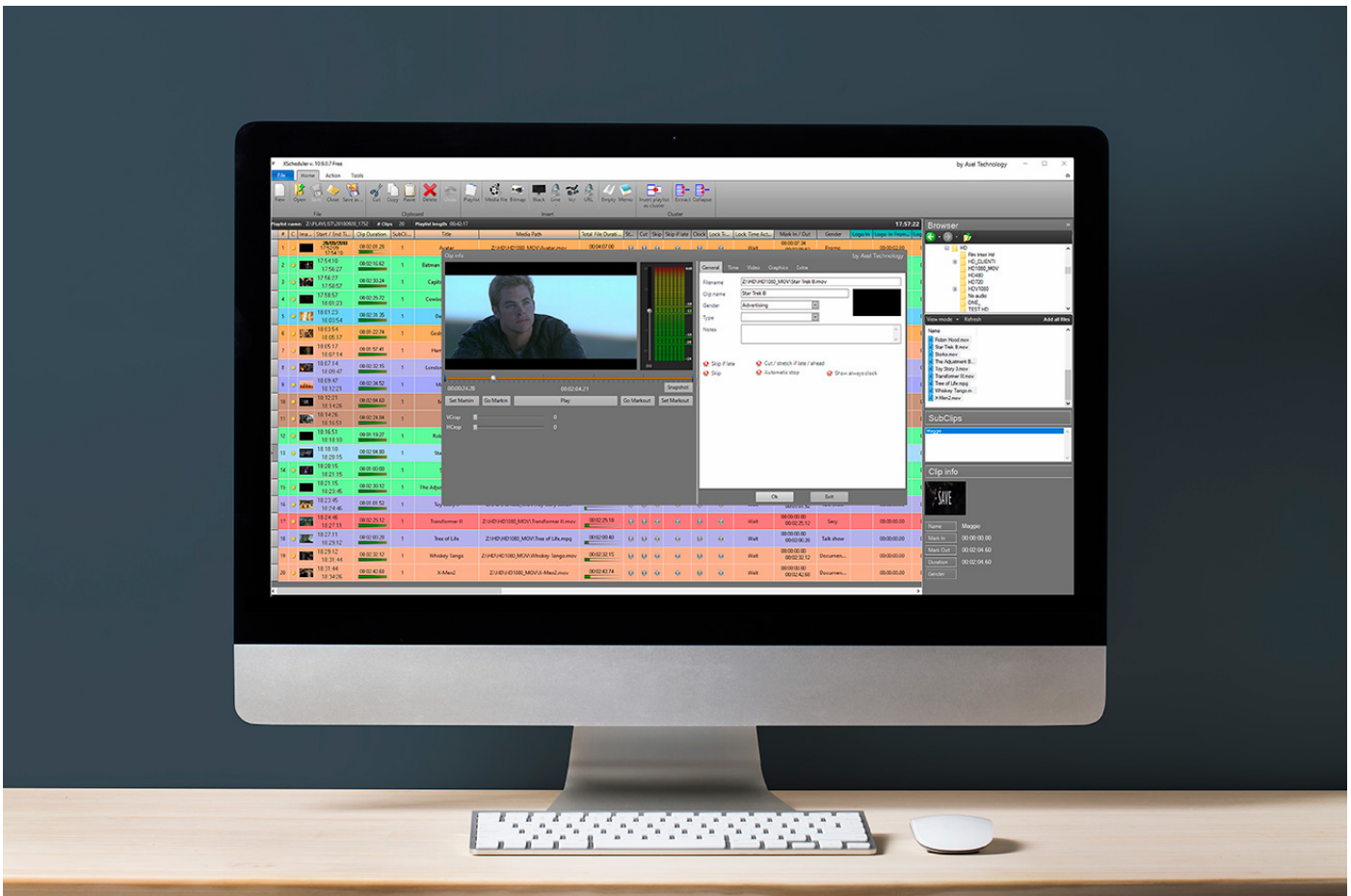




## XTrimmer

**XTrimmer** is the free app for quality control and metadata insertion. It allows to mark the clips for in and out points, segment the clip for advertisement interruption, but also modify the clip's video and audio parameters to exactly match the desired output. Parameters include aspect ratio correction modes, vertical and horizontal crop to minimize letterbox on air, field dominance inversion, but also precise audio level correction with automatic loudness calculation. **XTrimmer** allows secondary CG events insertion to air graphics precisely superimposed and timed with the playlist also defining crossfade/wipe effects between clips. Video file is leaved untouched as an original, while all parameters are saved as metadata, invisibly

piggy-backed to the video file, so you can copy, move and rename the file, as the metadata follows automatically. **XTrimmer** is a completely free application allowing to be installed on any networked computer and so participating effectively to the automation workflow. **XTrimmer** can be used with the computer screen and loudspeakers, but also features video outputs on most blackmagic or aja video devices and/or NDI output, allowing quality control in full video resolution, also with CG and graphics. Suggested system requirements are i-7 on Windows 10, decklink mini monitor and 32" HDMI TV.



## XScheduler

**XScheduler** is the free app for offline playlist creation. It allows to

manage and edit playlist simply dragging and dropping video files on the GUI, defining starting dates and times, and allowing to modify the clip parameters individually, such as aspect ratio correction modes, vertical and horizontal crop to minimize letterbox on air, field dominance inversion, but also managing secondary events like GPI and character generation and graphics. Clips are highlighted by color matching the clips's gender. Live sources and URLs can be inserted directly in the playlist, and, like Xtrimmer, realtime video preview with graphics is available on the computer screen and also as a video output on most blackmagic or aja video devices and/or NDI output, allowing quality control in full video resolution, also with CG and graphics. **XScheduler** is a completely free application allowing to be installed on any networked computer and so participating effectively to the automation workflow. Suggested system requirements are i-7 on Windows 10, decklink mini monitor and 32" HDMI TV.

## Future-proof Cloud & IP workflows

Support of IP I/O such as NDI, SMPTE 2022 & SMPTE 2110 (only with specific video cards) turns XTV Suite to a game changer. Public and Private Cloud deployment is welcome. NDI and IP sources are also supported directly on the playlist, allowing playout of NDI, UDP, RTP, RTSP, RTMP, HTTP streams and setting parameters specifically, such as aspect ratio correction modes, vertical and horizontal crop to minimize letterbox on air, field dominance inversion, etc. An internal IP encoder allows sending playout output via UDP to external multiplexers, or via RTMP,HLS,RTSP,IIS Live smooth, or windows media streaming to cloud servers for media distribution on



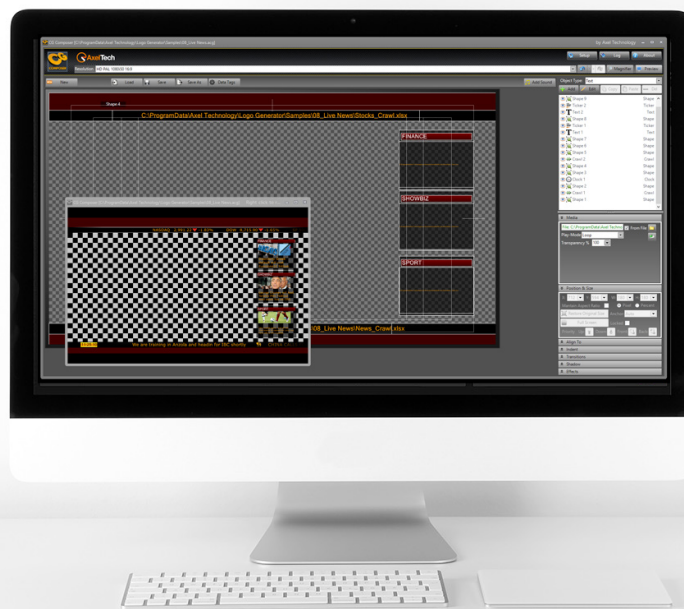
internet. If an Nvidia GTX or better board is installed, GPU accelerated compression allows to use H264 and H265 codecs without affecting the computer's CPU.



## Integrated multi layer CG

Advanced graphics can be overlaid on top of the playlist and can be used for simple channel branding or may include complex multi layered objects with tickers, rolls, crawls, time, countup/down and slideshows. The free app CG composer allows creation of graphics templates to be aired manually or associated as secondary events in the playlist for automatic workflows. CGcomposer allows importing of any bitmap file format, sequence of bitmaps or video file, and manages alpha channel for perfect transparencies. TGA or PNG sequences, animated GIF, Quicktime Anim and Prores 4:4:4:4 are fully supported for animations with alpha channel. Text and file paths for graphics can be specified in

Xtrimmer, Xscheduler or Xpayout for dynamic text workflows like song info animations for music TVs, for example. Data source for text, rolls, crawls and tickers can be imported from TXT files, CSV or XLSX, updating automatically on content changes. Front color, back color, font and alignment are imported from XLSX files allowing rich text format for tickers, rolls and crawls. Animations can be inserted into cells as hyperlinks and aired seamlessly for a really professional look. XLSX formulas, macros and database connectors can be used to create your own custom application for CG management. In Xpayout the CG layer can optionally be output as a separate KEY and FILL SDI signal for external DSK insertion, or a NDI stream with alpha for Video over IP usage.

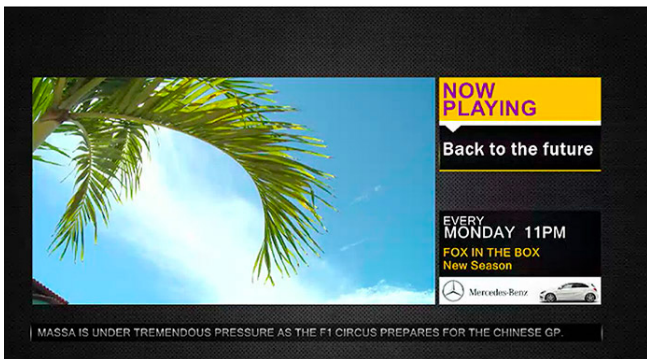
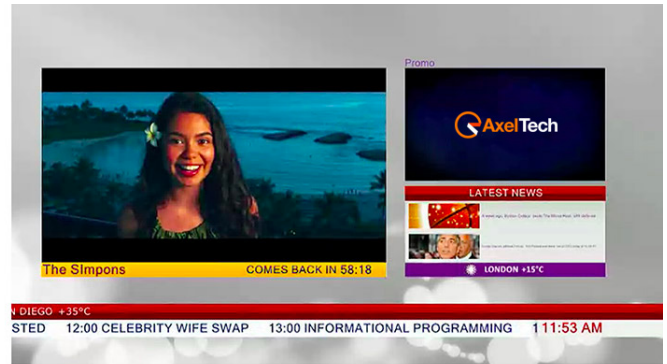


## CGComposer

### Amazing SqueezeBacks

The built-in 2D DVE and an additional multi-layer **CG** background allow smooth squeezebacks on top of customizable animated graphics with tickers, rolls, crawls and time with dynamic text and countdowns for your “Now showing”, “Up next” and “Coming back in ..” workflows. Video files in any format can also be added to the background layer as Picture in Picture objects. Squeezebacks can be associated to playlist items, like normal **CG** pages, and used as secondary events to be aired

automatically following exact timing.



## Remote control of external devices and LIVE events

Xplayout is a modern IP based - any file format - automation, but also allows traditional remote control of external devices such as Cart machines, VCRs, logo generators and especially GPIs and master controls, video mixers and routing switthers, such as Blackmagic Atem, Videohub, Newtek Tricaster or any device with RS232/422 control. Live events can be inserted directly on the playlist and TCPIP or serial commands will be automatically sent to the external devices. Alternatively, live sources can be aired in "AV bypass mode" connecting them to capture card inputs of the system. In this case a delay from 3 seconds to several days can be applied to accomplish a time shifter mode, very

handy when managing country time zone differences.

## Secure and Reliable 24/7 with redundancy

**Xpayout** is among the most reliable automation systems on the market, offering a variety of redundancy options:

**1+1 Master and Slave workflow** is built in the automation. Whatever the master XPayout does, the slave follows automatically. If a changeover is used, it can send a GPI signal to the slave, transforming it into the master. (AxelTech DML can be used as a sw changeover)

### [DISCOVER DML](#)

---

**N+1 with the free app XEmergency.** XEmergency monitors the audio coming from up to 8 Xpayout systems using add-on audio capture cards. Whenever audio levels drop for a specific length of time, XEmergency fires up a local XPayout, resuming the playlist from the point of interruption and blacklisting the failing system to the routing switcher. Alarm notification is achieved through SMS or email.

---

**Media redundancy is built in the XPayout, allowing to define a main media path to a networked NAS for example, a backup media path to a secondary NAS, and a preferred media path to a local hard disk copy of the media. Switching from one path to the other is completely automatic, and, in case of main media path failure, resume from backup path is available after just a few frames.**

---

Media redundancy is also achieved with the optional app XMirror, the media cache sw, which keeps a copy of the media on local hard disks.

## XTV Compact version

Four rack unit machine with simultaneous play and capture on local storage



## XTV Server solution

Each machine capture and play directly from a shared server storage



## XMirror and XMusic, the options for XPlayout

**XMirror** is a great feature when using a network NAS workflow. **XMirror** copies all files which populate the playlist from the big NAS onto a small local hard disk. Copies are performed slowly (to avoid saturating LAN bandwidth) and constantly (any modification to the playlist will trigger the copy process). Old files are deleted automatically to preserve disk space. If LAN or NAS fails, files will be played automatically from the local disk. If Local hard disk path is specified as a preferred path, media will always be played locally.

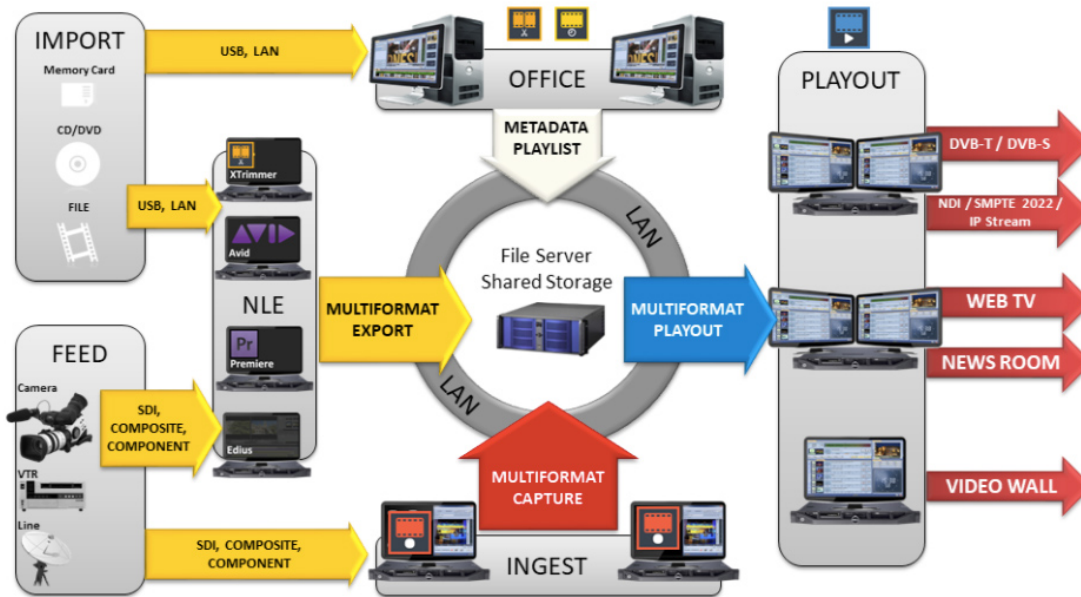
**XMusic** is the add-on which allows automatic playlist creation following rules that are typical of the radio world. Daily schedule is divided into “clocks” where musical genders can be listed according to the time of day. Then **XMusic** chooses the songs automatically, not repeating same songs and same authors, thus creating comfortable and pleasant musical selection. **XMusic** is great for MUSIC TVs, or for channels which need a random, not repetitive, automatic media selection.

## XMAM archive and catalogue *optional*

**XMAM** is **AxelTech** web based media asset management system to organize video and audio files, photos and documents. It integrates seamlessly with XPlayout and XScheduler allowing to Drag & Drop any media directly from the web browser to the playlist.

DISCOVER XMAM

## XTV Suite workflow



## XPlayout

### Specifications

- Supported Video Cards: Blackmagic Design DeckLink and Intensity, AJA Corvid, Bluefish
- Resolutions: SD, HD, 2K, 4K (depending on AV card)
- Simultaneous NDI output
- Simultaneous WebRTC output
- Preview output on SDI

### GUI

- Full screen GUI optimized for 1920x1080 monitor
- Channel Alias
- Preview framerate adjust for RDP optimization
- CC preview
- Drag and Drop of multiple files

Up to 16 Audio channels	Single clip position duration and position display
Timecode rp188	Total playlist duration and remain display
Virtual device emulation for use as capture device in 3rd party software	First frame positioning
Split CG layer on separate SDI or NDI in Key and Fill	Dual graphical or grid style playlist GUI
SDI or NDI inputs for LIVE sources in AV bypass	Drag and Drop to GUI
	OSD vu-meters and waveform
	Realtime video preview
	GUI lock with password
	Customer Logo on main screen
	Colors according to file gender or status

### Features

Virtually any video and file format compatibility	Emergency file with hotkeys, also with numeric keyboard
Automatic upscale, downscale, framerate adaptation and aspect ratio correction	Automatic load of last playlist at start-up
CG overlay	Routing switcher remote control : Blackmagic Design ATEM and Videohub, NewTek TriCaster, any RS232 or RS422 routing switcher or master control
Key output on SDI with 32 bits Quicktime Anim, Quicktime ProRes 4:4:4:4, bitmap sequence	VCR automation UVW, VP9xxx or and RS422 SONY
As run logs	Cart machine control: PROMATIC, DIGICART
Log files	Fast CG for emergencies: clock, text and crawl
VGA compatibility mode for old VGA cards	
Separate audio track file management	



Remote control of Blackmagic Design ATEM and NewTek TriCaster	Automatic CG according to file gender or user custom types
MarkIn and MarkOut management (triggering)	Remote control of external CG
Frame accurate loops REC while PLAY (for specific formats) with endless MarkOut	Integrated master and slave workflow
Realtime Vertical and Horizontal Crop	From 5 seconds to 1 day delay for SDI/NDI sources as time shifting
Realtime field swap: top bottom progressive	Subtitle rendering for SRT files
Realtime aspect ratio correction mode: Letterbox, no letterbox, stretch	Advanced CG with clocks, tickers, rolls, crawls, bitmap animations, any video file format
Detailed info on playlist, preview and output status	2D Squeezeback with advanced background graphics layer
AGC – Automatic Gain Control	All CG graphics as secondary events
Automatic switch on backup path in case of main path failure	GPI in/out
Automatic play from preferred path if same media copy is available	Automatic skip/cut if schedule is late
Status file and thumbnail update of main output	Exact time management in cut/wait for end of current event
Autofill from folder when ahead of time or end of playlist	CG composing tool for template creation
Automatic load of playlist according to file syntax	Non-intrusive sub clip creation for advertisement insertion
	Crossfade/effects between files
	Traffic scheduling tool
	Quality control tool with SDI/NDI output, metadata insertion and loudness control
	Automatic media copy tool from NAS to local hard disk (optional)

Automatic music playlist creator (optional)

## Xingest

### Specifications

Supported Video Cards: Blackmagic Design DeckLink and Intensity, AJA Corvid, Bluefish

Resolutions: SD, HD, 2K, 4K (depending on AV card)

Simultaneous NDI output

Simultaneous WebRTC output

Preview output on SDI

Up to 16 Audio channels

Virtual device emulation for use as capture device in 3rd party software

### GUI

Full screen GUI optimized for 1920x1080 monitor

Channel Alias

Preview framerate adjust for RDP optimization

CC preview

Drag and Drop of multiple files

Single clip position duration and position display

### Features

Virtually any video and file format compatibility

Automatic upscale, downscale, framerate adaptation and aspect ratio correction

CG overlay

Key output on SDI with 32 bits Quicktime Anim, Quicktime ProRes 4:4:4:4, bitmap sequence

As run logs

Log files

VGA compatibility mode for old VGA cards

Separate audio track file management

Remote control of Blackmagic Design ATEM and NewTek TriCaster

MarkIn and MarkOut management (triggering)

Frame accurate loops REC while PLAY (for specific formats) with endless MarkOut

Realtime Vertical and Horizontal Crop

Realtime field swap: top bottom progressive

Realtime aspect ratio correction mode:

Total playlist duration and remain display

Letterbox, no letterbox, stretch

First frame positioning

Detailed info on playlist, preview and output status

Dual graphical or grid style playlist GUI

Drag and Drop to GUI

AGC – Automatic Gain Control

OSD vu-meters and waveform

Automatic switch on backup path in case of main path failure

Realtime video preview

GUI lock with password

### File format wrappers

Customer Logo on main screen

Mpeg Program (MPG)

### Video Codecs

Mpeg Transport (TS)

MPEG 4 part 2

MPEG4 part 14 (MP4)

Cisco OpenH264

QuickTime (MOV)

Intel Quicksync H264

DNxHD (MOV)

Nvidia NVEnc H264

IMX MPEG4

Nvidia NVEnc H264 lossless

MXF

Nvidia NVEnc H265

MXF D-10 (IMX)

MPEG 1

GXF

MPEG 2

DV

DV

FLV

DVCPRO

DVD VOB

MJPEG

ASF

FLV Sorenson

iPod Mp4

HuffYUV

AVI

WMV 8

Matroska (MKV)

Google VP8

WebM

Image Sequence (DPX, PNG, JPG)

Apple Prores proxy, LT, 422, HQ

QuickTime ANIM

Uncompressed 422 8-bit

Uncompressed 422 10-bit

DNxHD

VC3

OPEN JPEG2000

DPX

### System requirements depend on

Video capture resolution

Video codec format

Number of simultaneous  
capture/streaming/proxy

### Audio codecs

WAV (16, 24, 32, Cinema, signed, floating  
etc)

MP2

MP3

AC3 (ATSC A/52A)

AAC

ALAC

ADCPM

VORBIS

### Suggested system requirements

I7 8700K CPU

Windows 10

16GB RAM

NVidia GTX

### Minimum system requirements

I3 CPU

Windows 7

4GB RAM

## Main Specs

All in one broadcast 4K - 2K - HD - SD payout

**Complete workflow management tools: scheduling, trimming, graphic composer**

**Multiple codec payout in the same playlist with resolutions and framerates automatic adaption**

**Multiple formats payout, automatic up/down scaling and aspect ratio adjustment (16/9, 4/3, etc.)**

**File sharing on LAN architecture**

**Direct file payout from NLE (no transcoding)**

**Up to 16 audio channels management**

**Simultaneous NDI output**

**Direct streaming output transport stream MPEG2 and H.264 codec, or RTMP.**

**Automatic management of time during payout (delay/ahead) with filler**

**Live source full handling inside the playlist control of VTR, Switcher, GPI to Cart Machine**

**Multichannel and high availability configurations**

**Hot Key feature for instant videos payout**

**Graphic overlay: logos, clocks, tickers, animations**

**High quality squeezebacks with animated background**

**Subtitles in overlay and Closed caption**

**Clip trimming and Metadata for advertisement intentioned graphic contents**

**User friendly playlist view with explicative colour scheme**

**As run and system logs for certification**